



EAGLE CAMPER
MODEL



3-Years Structural Warranty

Eagle Cap Campers provide a 3-year structural warranty. Appliance warranties vary and are set by their respective manufacturer. Please contact your dealer for complete details regarding warranty



Best Insulated Period

- Ceiling R-19
- Walls R-13
- Floor R-22
- 30,000 BTU Furnance
- Ducted Basement Heat
- True Thernal Pane windows
- Insulated Baggage Doors



DARE TO COMPARE PAGE

EAGLE CAP CONSTRUCTION

1. GEL-COAT AERODYNAMIC

TWO-TONE FIBERGLASS FRONT CAP! No other camper is built with these structural components – tougher, stronger, better sealed! This cap is designed to fit perfectly to the contour of our camper providing a tight, perfect fit. You will also note the beautiful two-tone gel-coat finish, adding that high end luxury look with better aerodynamics!

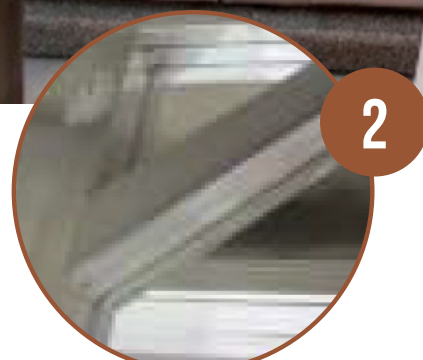
2. AIRCRAFT QUALITY WELDED ALUMINUM FRAME SUPERSTRUCTURE!

Best aluminum framing techniques -utilizing 2x2 and 2x4 Aircraft Quality Aluminum framing plus AML's exclusive TCC® bonding process creates a second to none structure and also provides you with our exclusive AML 3-year structural warranty!

3. AML Exclusive "All Season Six-Step exterior sealing process"

Six different levels of exterior seals providing the best sealed camper in the industry!

1. All seams/joints sealed with construction adhesive/sealant.
2. One-piece fiberglass cap and seams are sealed with 3M Extreme Seal®, the best seal in the industry!
3. Exterior finish trim is sealed with butyl seal, no putty tape that dries out!
4. Finish Trim is then silicone sealed.
5. AML Exclusive – Reverse seal front seam seal system
6. AML Exclusive – Channeled side roofing seal system





4. EC MAX – MAXIMUM 4-SEASON INSULATION!

Highest R-Values – We use only * Closed Cell Block Foam Insulation, TPO Insulated roof, providing you with R-19 in ceiling / R-22 in the floor / R-13 in the walls. True thermal pane insulated windows, 1” insulated exterior baggage doors, easy access winterization valves, ducted heat with full basement heat and a 30,000 BTU furnace, all standard, making the Eagle Cap cooler in the summer, warmer in the winter, easier to winterize and providing you the best 4-Season thermal insulated truck camper in the industry! No One Else Has This Much Insulation... you decide! * Think of a coffee cup... 1/8” thick, 160 degree coffee and never hot to the touch, plus no liquid penetration... imagine 28 time that thickness in your roof!

5. LAMILUX 4000 GEL-COAT FIBERGLASS EXTERIOR WALLS!

Lamilux 4000 fiberglass is not only a high gloss beautiful finish but is also a thicker fiberglass providing you with a stronger wall structure than other campers!

6. FRAMELESS - 4-SEASON TRUE THERMAL PANE WINDOWS!

Eagle Cap is truly built like no other camper and it is only logical that Eagle Cap would have the latest high end luxury “Frameless” windows. Not only are they beautiful but they are actually a true thermal pane window meaning they are 4-season insulated and provide you 40% more R-Values over a standard RV window used in other brands!
Eagle Cap “Built Like None Other”... you decide?

DARE TO COMPARE PAGE

Exclusive Features

- 3-Year Structural Warranty
- EC Max - 4 Season Insulated
- One Piece Fiberglass Front Cap
- TCC Construction (True Composite Construction)
- All Season 6-step Sealing Process
- Reverse Trim TPO front roof seal
- Channeled TPO side roof seal
- Frameless TTP Windows True Thermal Pane
- 26" Entry Doors - wider easier access
- Comfort Step Bumper - Optional
- Modular Dinette Furniture
- Theater Seating Recliners - Optional
- 32" TV (Optional 1160, 1165, 1200)
- 72"x 84" Cal King Bed (1200)
- Grabber Catches on all Int cabinet Doors
- Soft/Self Closing drawer guides
- Slam Latches - Ext Compartment Doors
- 30,000 BTU Furnace
- Interior/Exterior Mood Light - LED
- 102" Wide Body Models - 1160, 1165, 1200
- Flame Treated Fabric - all models
- 7cu ft Refer 811 and 8cu ft Refer 1160, 1165, 1200

24 Standard Features

Optional or Not Available on Other Brands
Also included in our base weights

- One Piece Fiberglass Cap
- Lamilux 4000 Ext Fiberglass
- Keyless Entry - std on all models
- Stereo AM/FM/CD/DVD/Bluetooth/HDMI/ App Controllable w/ext Speakers
- Heki Bedroom Skylight
- Microwave
- Micro-Convection oven (1200)
- Fantastic Fan
- Awning Slide Toppers
- Dual 12V / USB Charging Centers
- Frameless TTP Windows - True Thermal Pane
- Taller Bath Skylights
- 4-Season Insulation - "EC-Max"
- 1" Insulated Ext doors
- Water Heater By-pass Valve
- Winterization Valve
- LED Lights - Interior & Exterior
- Digital Thermostat-(A/C & Heat)
- Dream Dinette - no annoying table leg
- Sofa / Bed - (std 1160/1165/1200)
- Sealed Burner Cooktop
- Black Tank Flush System
- Phat Ladder®
- Stainless Steel Appliances

Available Options

- 19" & 28" LCD 12V TV (select models)
- 32" LCD 12V TV (1160, 1165, 1200)
- Low Profile A/C w/Digital Wall T-Stat
- Comfort Step Bumper - w/double step w/ reversed treads (811 only)
- Generator Ready - Required w/Gen Opt
- Generator - 2500W Cummins/Onan LPG
- Jack Brackets - Swing Out (Req for Dually)
- 12v Electric Patio Awning w/LED (1160,1165, 1200)
- 12v Power Rear Awning w/LED (811 only - n/a on 1160, 1165, 1200)
- Side Patio Awning - Box 811- 8',
- Roof Rack System-(Maggie w/Cross Bars)
- Solar Panel - 100 Watt w/Regulator
- Solar Panel - Additional (add 2 for up to 3)
- Theater Seating Recliners - w/swing away tables (Replaces std sofa in 1160, 1165, 1200)
- Water Filter - drinking w/separate faucet
- Wireless Backup Camera - HD Color

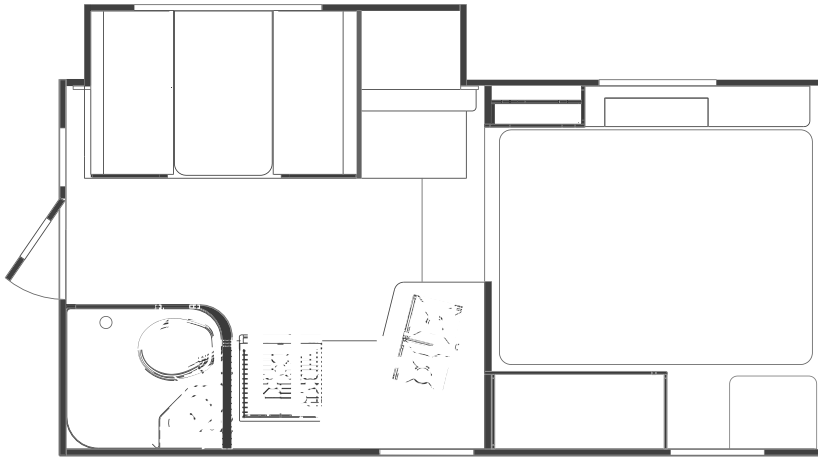
EAGLE CAP EXCLUSIVE & INDUSTRY LEADING INTERIORS...

EAGLE CAP - BUILT LIKE NONE OTHERS!

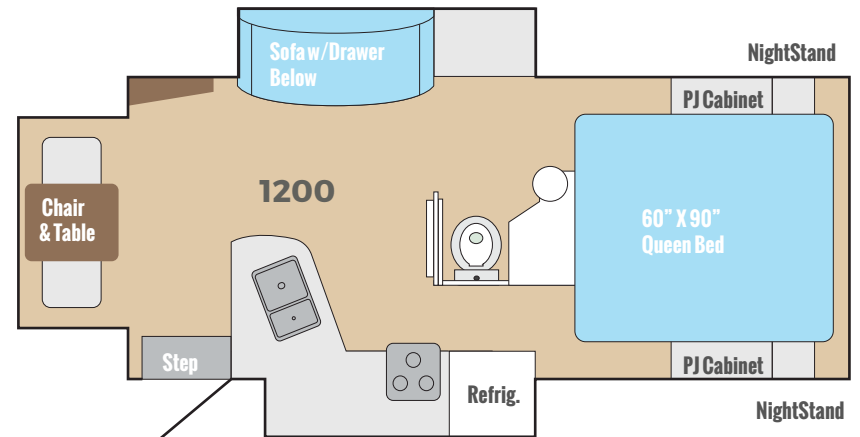
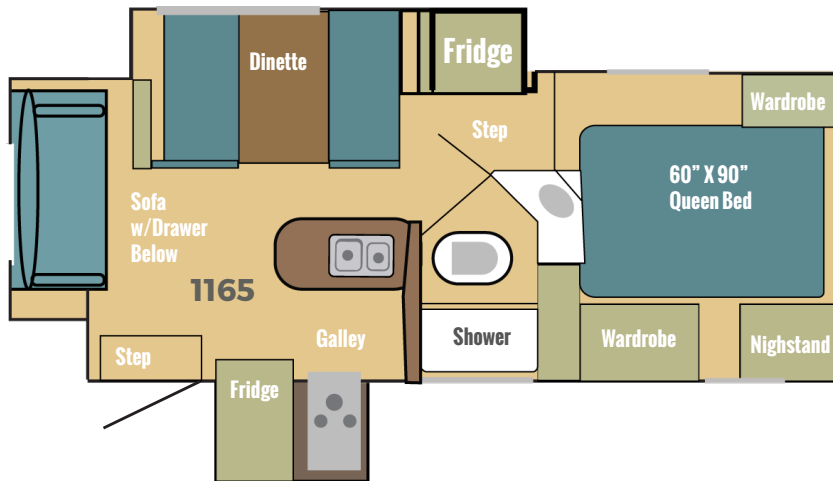
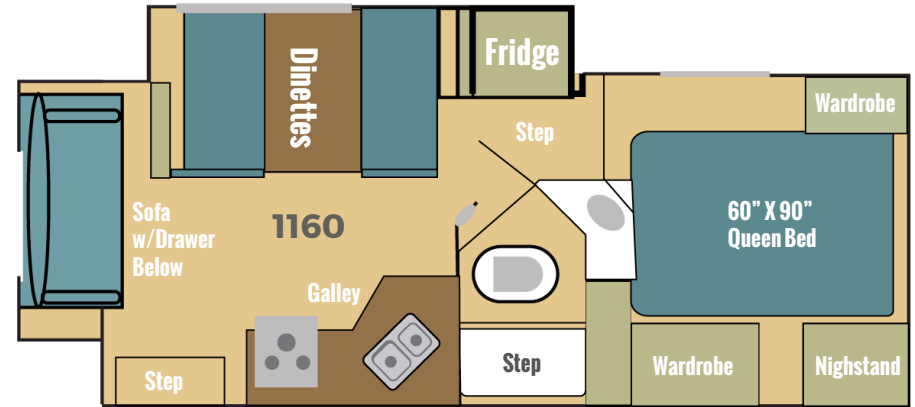
The dinette seating is modular in design, meaning the standard Dream Dinette® sections are designed to be removed, replaced and/or optioned with any of our other industry first and exclusive features like a Sofa Bed, our Theater Seating Recliners. All of these features are built to the same dimensions making them completely interchangeable... Only in an Eagle Cap can you have a set of Theater Seating Recliners with dining/laptop Swing/Away tables. Want something other than that in your dinette area? Order without the dinette and add what ever aftermarket item you wish, desk, bunk beds you name it! EAGLE CAP's engineering and innovation shine through...



EAGLE CAP'S LUXURY SINGLE, DOUBLE & TRIPLE SLIDE FLOORPLANS



811 Fits SB and LB Trucks (6' to 8' even w/Generator)



WEIGHTS AND MEASURES

Weights & Measures	1160 Double Slide	1165 Triple Slide	1200 Triple Slide
Standard Sleeping Capacity	6	6	6
Floor Length	11'6"	11'6"	11'11"
Exterior Width (inches)	102"	102"	102"
Exterior Overall Length (Nose to rear ladder)	20'1"	20'1"	21'3"
Exterior Height (Floor to top of A/C)	112"	112"	112"
Interior Height (inches)	76"	76"	76"
Dinette Size (inches)	42" x 66"	42" x 66"	N/A
Fresh Water Capacity (US Gallons)	67	67	67
Grey Water Capacity (US Gallons)	39	39	35
Black Water Capacity (US Gallons)	39	39	35
Hot Water Capacity (US Gallons)	6	6	6
Refrigerator Size (Cubic Feet)	8	8	8
Dry Weight (LBS)	4649	4890	4933
COG (Center of Gravity inches)	57.5"	61"	58"

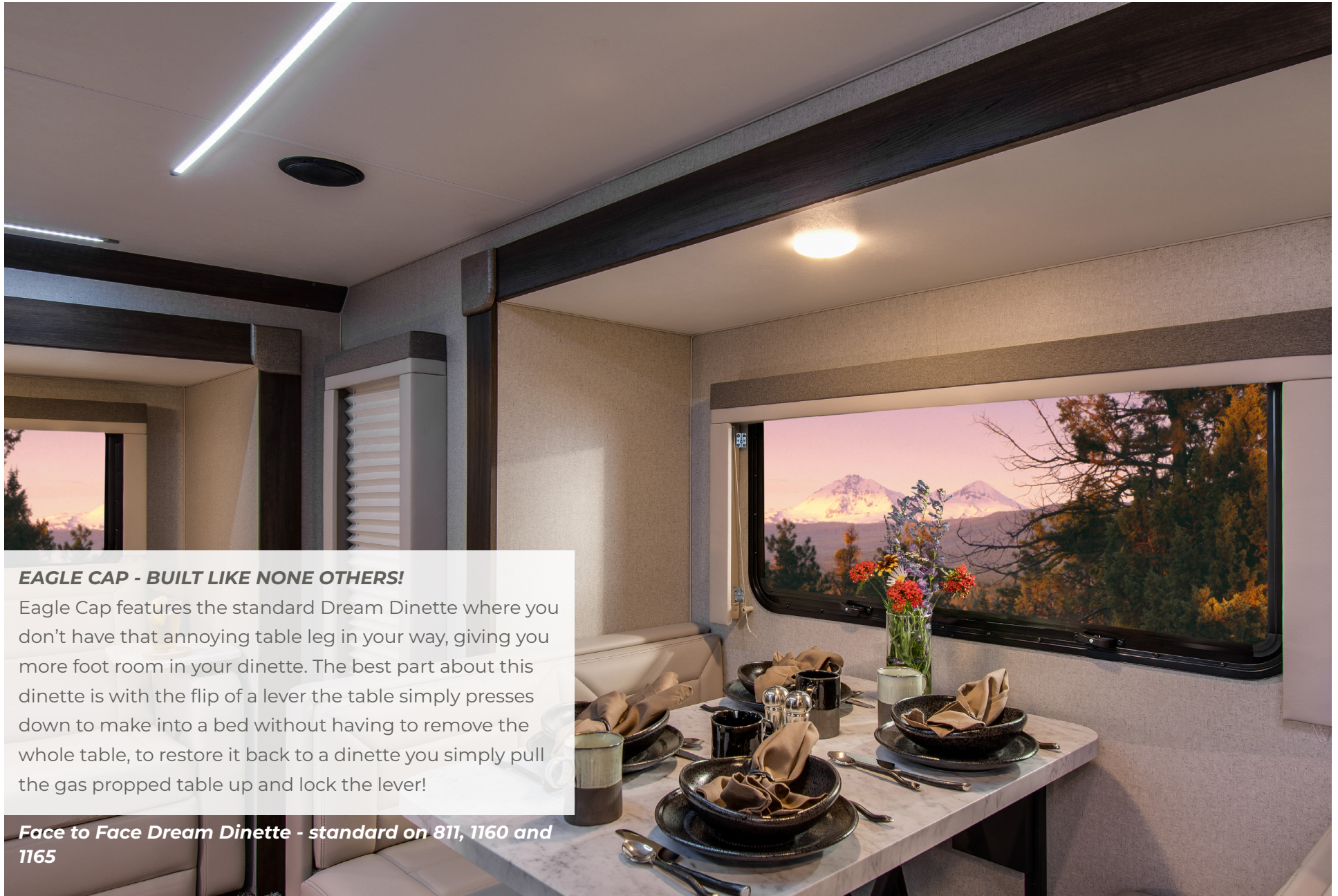
See "Truck Camper Guide" Page for Matching a Truck to a Camper

Notice: Eagle Cap's policy is one of continual improvement and reserves the right to make changes to all features and/or options at our discretion without prior notice and without incurring any obligation. Note: Photos may not be of the current model year or interior color. Please confirm all options and details with your dealer and/or an Eagle Cap representative before ordering or making a final buying decision.

Weights & Measures	811 Single Slide
Standard Sleeping Capacity	4
Floor Length	8'11"
Exterior Width (inches)	96"
Exterior Overall Length (Nose to rear ladder)	17'4"
Exterior Height (Floor to top of A/C)	105"
Interior Height (inches)	78"
Dinette Size (inches)	43" x 69"
Fresh Water Capacity (US Gallons)	42
Grey Water Capacity (US Gallons)	35
Black Water Capacity (US Gallons)	35
Hot Water Capacity (US Gallons)	6
Refrigerator Size (Cubic Feet)	7
Dry Weight (LBS)	3362
COG (Center of Gravity inches)	39.5"



ROOMY CAMPERS WITH LARGE DREAM DINETTES



EAGLE CAP - BUILT LIKE NONE OTHERS!

Eagle Cap features the standard Dream Dinette where you don't have that annoying table leg in your way, giving you more foot room in your dinette. The best part about this dinette is with the flip of a lever the table simply presses down to make into a bed without having to remove the whole table, to restore it back to a dinette you simply pull the gas propped table up and lock the lever!

Face to Face Dream Dinette - standard on 811, 1160 and 1165

EXCLUSIVE LARGE GALLEYS...



The 1160 Galley enjoys large cabinet storage and stainless steel appliances, large countertop area, undermount stainless steel sink, grated cooktop with large oven below. Note the optional 32" LED 12V TV and the separate filtered drinking water faucet.
Eagle Cap Features Shine through!



The Eagle Cap 1200 enjoys the largest galley in the industry with abundant storage and even more counter space. Note the 3 burner cooktop with three large drawers below and the 30" stainless steel convection microwave above. When you add the pull-out pantry and the 8 cu ft refrigerator the 1200 Galley is more like an apartment than a truck camper... Eagle Cap Exclusives through out!



The Eagle Cap 811 Single Slide enjoys a large galley with abundant overhead cabinet storage and plenty of counter space. The Stainless Steel Appliances really accent this open concept living, dining and Galley floorplan... This model gives you the largest floor space in a single slide truck camper! Eagle Cap Luxury not seen in other campers!

BUILD YOUR OWN CAMPER ON OUR WEBSITE AT - AMLRV.com

LUXURIOUS QUEEN & CALIFORNIA KING BEDROOM SUITES...



The 811 Eagle Cap has a roomy luxurious Queen Bedroom Suite with dual bedroom windows for that cool cross ventilation, dual door wardrobe and an AML exclusive Camper Caddy Storage system...



Eagle Cap 1200 Features an industry Exclusive California King (72" x 84") Bedroom Suite with dual access from both sides of the camper.

BUILD YOUR OWN CAMPER ON OUR WEBSITE AT - AMLRV.com

TRUCK CAMPER GUIDE

MATCHING A CAMPER TO A TRUCK

When purchasing a Truck Camper, there are a few important factors to consider

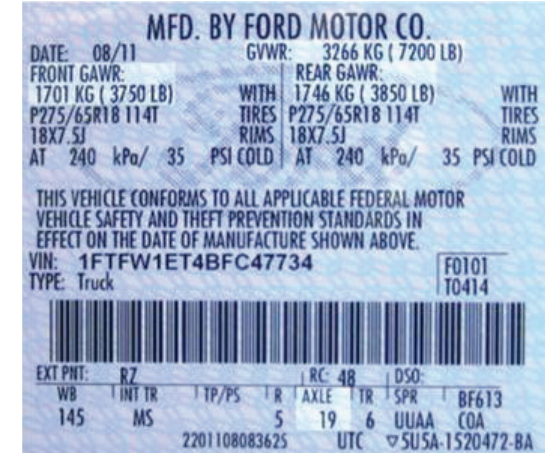
The payload capacity

sometimes this rating is posted in the glove box of your truck, if not, another way to determine payload capacity would be to weigh your truck, full of fuel, people and of course the dog, and then subtract that weight from the (GVWR) posted on the door of your truck (see example to the right) and that difference would equal your payload capacity (weight of camper you can carry). Example, your truck weighs 6800lbs and the GVWR on the door reads 9900lbs your payload would be 3100lbs (9900lbs-6800lbs=3100lbs).

GVWR (Gross Vehicle Weight Rating) – is the maximum weight the manufacturer rates their truck to carry, including weight of the truck and all people, cargo, fuel etc.

GAWR (Gross Axle Weight Rating) – is the maximum rating the manufacturer rates the axles to carry. These ratings are usually posted on the driver's side doorpost. To determine these ratings on your truck with cargo (camper) weigh your truck with just the front and then just the rear axle on the scales. This will give you your axle weights for your truck with your camper, these weight should fall within the manufacturers axle ratings.

Tire capacity (rating of your tire) – This is the tiny fine print on the sidewall of your tire, see photo to the right, usually just behind the tire inflation number. This will usually be a direct correlation to the axle ratings and GVWR on new trucks. **This will always be your weak link** in your weight carrying capacity and should always be checked before carrying any load, including a passenger car for that matter. **SAFETY ALERT** – Always make certain you choose tires with the proper load capacity to handle whatever load you are carrying with your vehicle! **Another Way to determine Payload** is from the Tire sticker on the door post of your truck (right), this sticker is added on newer trucks reflecting tire load or payload rating



TRUCK CAMPER GUIDE

COG (Center of Gravity) – also known as Center of Balance, is the point that the weight of your camper is balanced, AML notes the COG on every camper with a large red arrow, this is determined as it is weighed and balanced as it goes out the door. Your camper COG should fall into the “Load Range” of your truck, see your owners manual for this measurement. As you can see in this example, to the right, the COG of this camper easily falls into the load range of this truck. As the owner, it is your responsibility not to exceed the weight or COG specifications of your truck when purchasing a truck camper. Always think safety first before loading a camper on your truck. Please consult your dealer, who can help you select aftermarket items designed to aid in proper use of your truck and camper combination.



Suspension Enhancements - Suspension enhancements allow you to manage your load but does not change or add to a trucks GVWR. In some areas you can make upgrades to your truck and then have it inspected by a DOT (Department of Transportation) and you may be able to increase your “legal” GVWR, check with your local licensing agency for details in your area.



Torklift Stable Loads - We use and recommend this product. Today’s truck manufacturers market trucks to be our everyday driver, thus they want the empty loaded truck to be as smooth a ride as possible. To accomplish this they lower the overload spring (the heavy weight bearing springs) 3inch to 4inch lower to give that smoother ride when empty. The problem with this is when you add any weight to the truck it appears to be sitting low in the rear or “overloaded” since the vehicle has to drop 3 to 4inch before it touches the overload spring. Stable Loads by Torklift simply fill this space so that as soon as you add the load, the weight immediately sets on the overload springs allowing your trucks suspension to do what it was designed to do, carry a load, a camper in this case.



Air Bags - We use and recommend air bags also, in the correct application. Some truck manufacturers recommend airbags in all applications and suggest you inflate them 80 to 100 lbs in the bags. We don’t recommend air bags to be used in this way, because in too many cases, this will raise your camper up off of the suspension causing you to have a spongier unsafe ride! If you choose air bags we only recommend you inflate them so that you are just touching the overload springs of your truck for the best ride and handling characteristics.

TESTIMONIALS

“Your company makes, in my opinion THE BEST TRUCK CAMPER ON THE MARKET TODAY!...we have had many R.V’s & have viewed an abundance of truck campers critically! We’ve hashed over a variety of campers for over 2 years before making our decision, by dissecting them in every way possible...Adventurer products with the storage & drawers galore, accessibility to areas needed, beautiful cabinetry/decor, large baths, large fridge, ext. deck & comfort steps ETC!!! Maury was looking for a camper to fit our short box truck, yet meet all of my criteria too etc!” - Sharon (& Maury)

You guys are doing things right..

“Your campers really stand out from the crowd with all the innovative features, floor plans, and options. King beds, rear kitchens, etc. have drawn us to your brand as well as the construction and warranty. I wish I had a dually so I could get the 1165 model. A kitchen island in a camper, seriously... You guys are doing things right. Thank you again” - **Jason**

“The videos are great and these campers look like the best that’s on the market.”
- **Jim**

Thanks for all the support and answering my questions.

“Congratulations men very nice camper. Can not wait to get mine. Selling like hotcakes. Thanks for all the support and answering my questions.” - **Harley**

The tour helped cement our decision to purchase a Eagle Cap 1165

“We are writing to thank you for the great factory tour you gave us late on a Friday afternoon October 3. The tour helped cement our decision to purchase our Eagle Cap 1165. We were impressed with virtually every step of the design and build process. We look forward to using the camper on many adventures.” -Sincerely, **Bruce & Barb**

You stand out in the world of manufacturers...

“In our search for our Pickup camper we are blessed with God’s guidance in each step of the way. In your statement regarding the enjoyment of traveling and enjoying the wonder of God’s creation we appreciate your “witness” in words. Your campers stand out in all the searching and comparison shopping we have done. Thanks for your company, you stand out in the world of manufacturers, in all areas” - **Ken and Peggy**

I was impressed with the info I got off your website!

“I don’t normally answer emails like this but I was impressed with the info I got off your website. I am just starting to look at options for a new/newer RV and I thought your website was super useful.” - **Thanks Dan**





Manufactured by

Adventurer LP (AML)

3303 West Washington Ave

Yakima, WA 98903 PH: 509-895-7064

A Premium RV Manufacturer since 1969

Factory Tours - Welcomed!

We invite you to visit our facility!

During your tour you will see Eagle Cap Truck Campers being assembled with tremendous pride, skill and exclusive techniques that show you why Eagle Cap is "Built Like None Other"!

Tours are available by appointment

Please call for details or to make your appointment.

See ya soon...

www.AMLRV.com